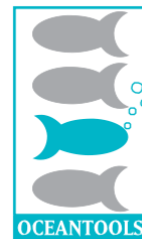


OceanSENSE

Dual-role Subsea Leak Detection AND Cement Dye Detection



Key features

- Field proven on hundreds of jobs
- Repeatable results
- Impressive detection range up to 7m
- ROV and Diver-held versions
- Results visible both on camera and via software
- Simple to operate system
- Up to 50x as sensitive as black-light detectors
- Detects wide range of dyes & substances

OceanTools OceanSENSE Subsea Leak and Cement Dye Detection systems are field proven on hundreds of offshore jobs with a very impressive detection rate of close to 100%. They can save you significant amounts of money because a SINGLE OceanSENSE unit may be used to detect leaks from subsea infrastructure AND detect cement dye during cementing operations.

When deployed in a commissioning role, OceanSENSE can be used to prove the structural integrity of spool tie ins and subsea structures beyond the capability of the human eye to see trace dye in water.

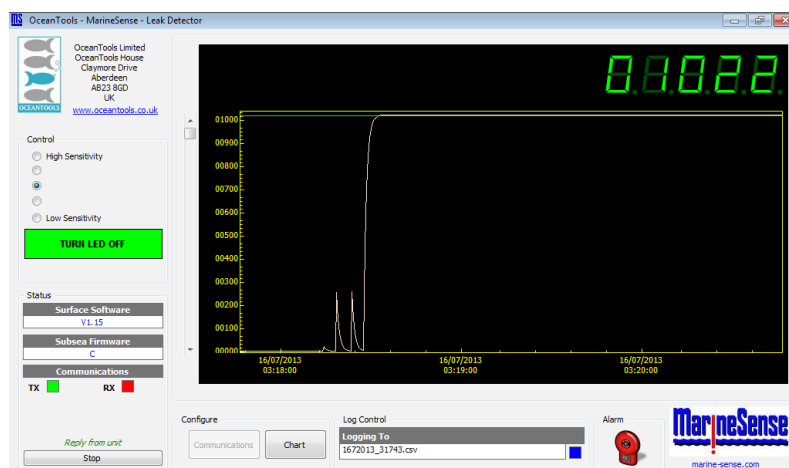
OceanSENSE emits high intensity light at a wavelength specific to the tracer dye under detection. The agitated fluid emits light at a different wavelength which is then detected by the OceanSENSE's photo-detector electronics. The light is passed through a photo-multiplier which amplifies the light many thousands of times before the electronics filter and analyse the data. The photo-detector electronics have a detection capability approximately **50 times** that of the human eye - and that of conventional "black-light" detection systems.

The ROV's lights do not have to be turned off when OceanSENSE is in operation thus making for significantly safer ROV operations. OceanSENSE units are designed to work with a wide range of dyes and substances including:

- OceanTools OceanDYE
- Rhodamines including RX9022 and B275
- Fluoresceins
- Pelagic 100 & 100 Pink
- Champion ClearDye

OceanSENSE can detect dyes other than the ones listed above. Please contact OceanTools for an up to date list of all detectable dyes & substances.

See an animation of OceanSENSE online at www.youtube.com/user/OceanToolsLtd

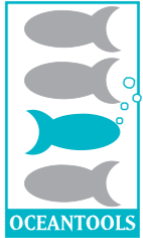


Clear & unambiguous indication of detected cement dye



OceanSENSE

Dual-role Subsea Leak Detection AND Cement Dye Detection



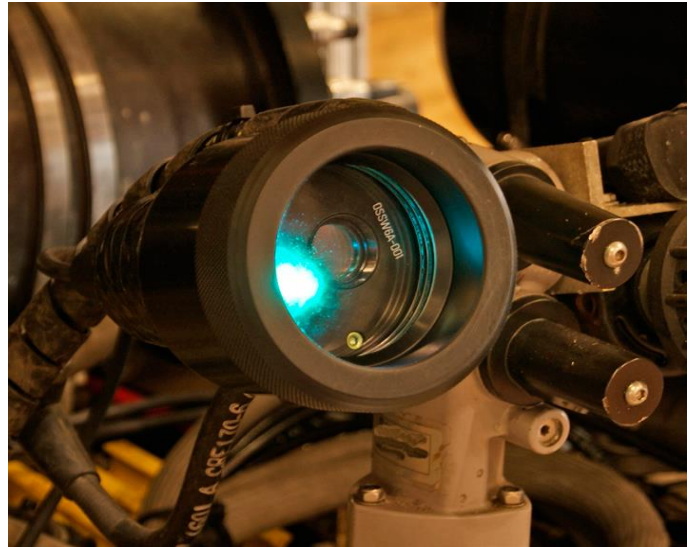
Specifications:

OceanSENSE-RM ROV Mounted System

Length including connector: 220 mm
Maximum diameter: 105 mm
Weight in air: 1.9 kg
Weight in water: 0.97 Kg
Standard depth rating: 3000 M
Data communications: RS232 / RS485
Power requirements: 250mA @ 24 VDC
Voltage range: 18 - 32 VDC

OceanSENSE-DH Diver Held System

Length including connector: 210 mm
Maximum diameter: 116 mm
Weight in air: 3.5 kg
Weight in water: 1.8 Kg
Standard depth rating: 200 M
Display: Internal micro VGA display
Power requirement: 24 VDC from battery pack



All specifications subject to change.
E&OE.

See an animation of OceanSENSE online at
www.youtube.com/user/OceanToolsLtd

